

LEGEND

	ELECTRICAL SERVICES SWITCHBOARD.
	SWITCHBOARD / CONTROL PANEL NOT PROVIDED AS PART OF THE ELECTRICAL SUBCONTRACT.
	SINGLE POWER OUTLET.
	DOUBLE POWER OUTLET.
	SPECIAL PURPOSE POWER OUTLET.
	CABLE ACCESS, TYPE AS NOTED.
	SINGLE PHASE ISOLATOR.
	THREE PHASE ISOLATOR.
	CONDUIT ROUTE.
	ELECTRICAL PIT, TYPE AS NOTED.
	ONE-WAY LIGHT SWITCH.
	TWO-WAY LIGHT SWITCH.
	CIRCUIT LINE.
	SWITCH LINE.
	POWER CIRCUIT DESIGNATION. DENOTES DB AND CIRCUIT.
	ELECTRICAL EQUIPMENT AS NOTED.
	OUTLET MOUNTED WITHIN RECESS KIT.
	CAT-6 UTP RJ45 COMMUNICATIONS OUTLET.
	CAT-6 STP RJ45 COMMUNICATIONS OUTLET.
	SUPPLY AUTHORITY METER.
	MULTI FUNCTION METER
	FUSE.
	SINGLE PHASE.
	THREE PHASE.
	CURRENT TRANSFORMER C/W REMOVABLE LINK.
	FUSE LINK.
	COMBINED FUSE SWITCH.
	CIRCUIT BREAKER.
	ISOLATOR.
	RESIDUAL CURRENT DEVICE.
	CONTACTOR - NORMALLY OPEN.
	CONTACTOR - NORMALLY CLOSED.

LEGEND

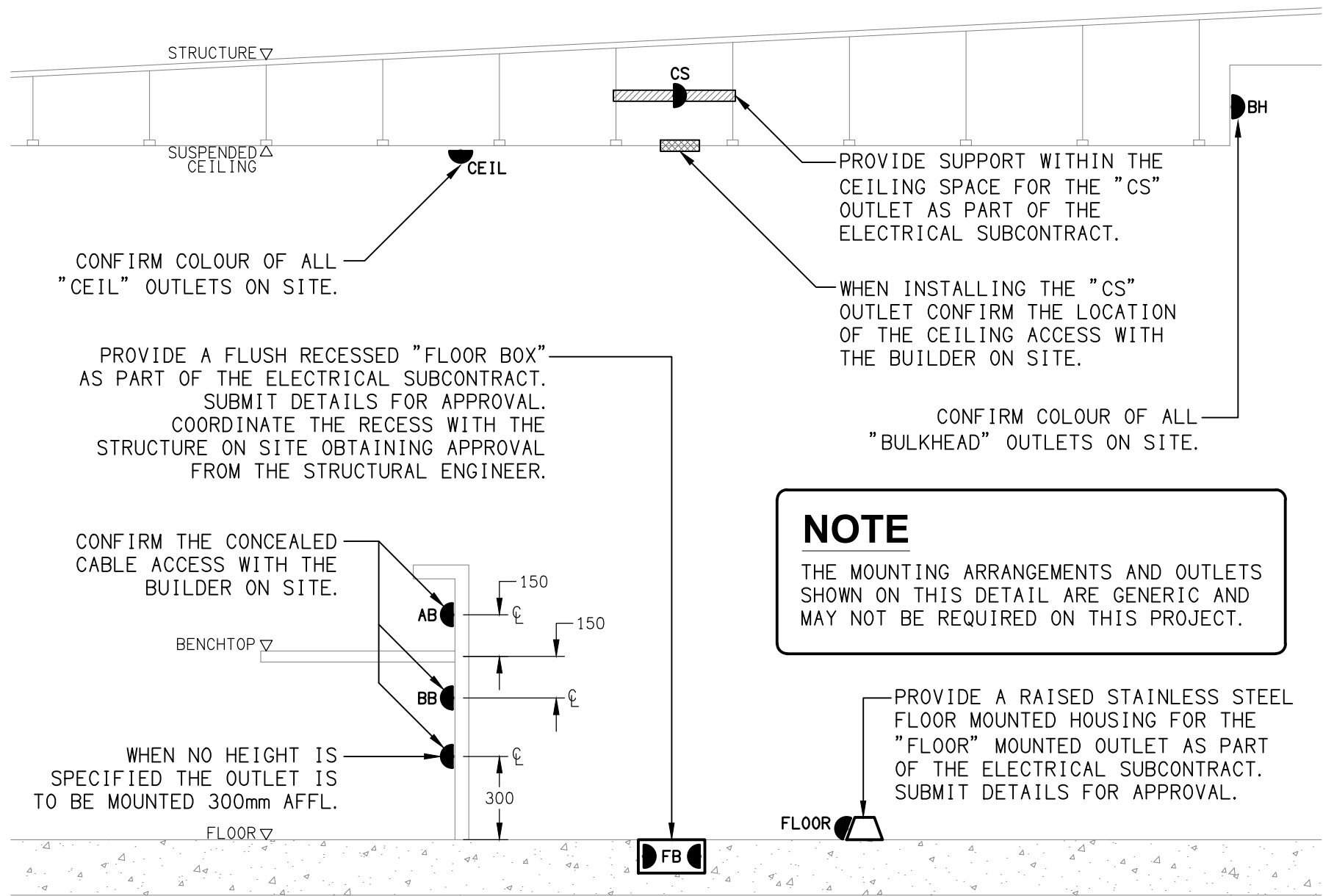
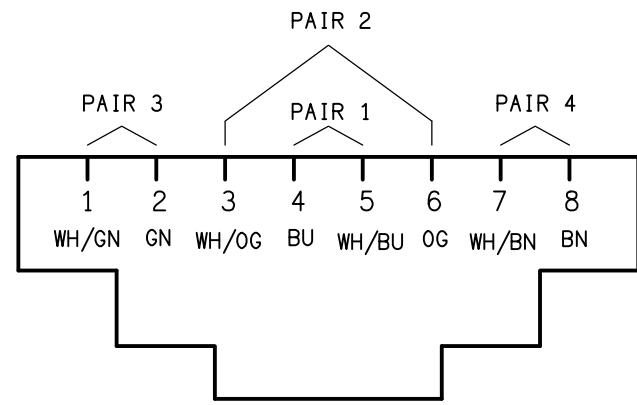
	REFER TO DETAIL NOTED FOR THE AREA SHOWN HATCHED. ADDITIONAL OUTLETS & FITTINGS MAY BE SHOWN ON DETAIL.
	E1: RECESSED GENERAL LED EMERGENCY LIGHT.
	E2: SURFACE MOUNTED GENERAL LED EMERGENCY LIGHT.
	EX: EMERGENCY LED EXIT LIGHT.
	Lx: LIGHT FITTING C/W NON-MAINTAINED EMERGENCY BATTERY PACK. TYPE AS NOTED.
	L1: 600 x 600 SURFACE LED FLAT PANEL.
	L2: SURFACE MOUNTED CAN DOWNLIGHT.
	L3: RECESSED DOWNLIGHT.
	L4: 1200 LONG SURFACE MOUNTED IP65 BATTEN C/W PRESENCE DETECTOR.
	L5: 1200 LONG SURFACE MOUNTED IP65 BATTEN C/W PRESENCE DETECTOR.
	L6: WALL MOUNTED AREA LIGHT.
	L7: LINK WALL LIGHT.
	L8: SURFACE MOUNTED CAN DOWNLIGHT.
	L9: STAIRWELL WALL LIGHT.

NOTE

ALL ELECTRICAL PENETRATIONS THROUGH THE ROOF SHEETING ARE TO BE IN LINE WITH THE STRUCTURAL OR MECHANICAL SERVICES PENETRATIONS TO AVOID DEDICATED FLASHINGS FOR THE ELECTRICAL SERVICES.

SCHEMATIC

RJ45 PINOUT CONFIGURATION
NOT TO SCALE

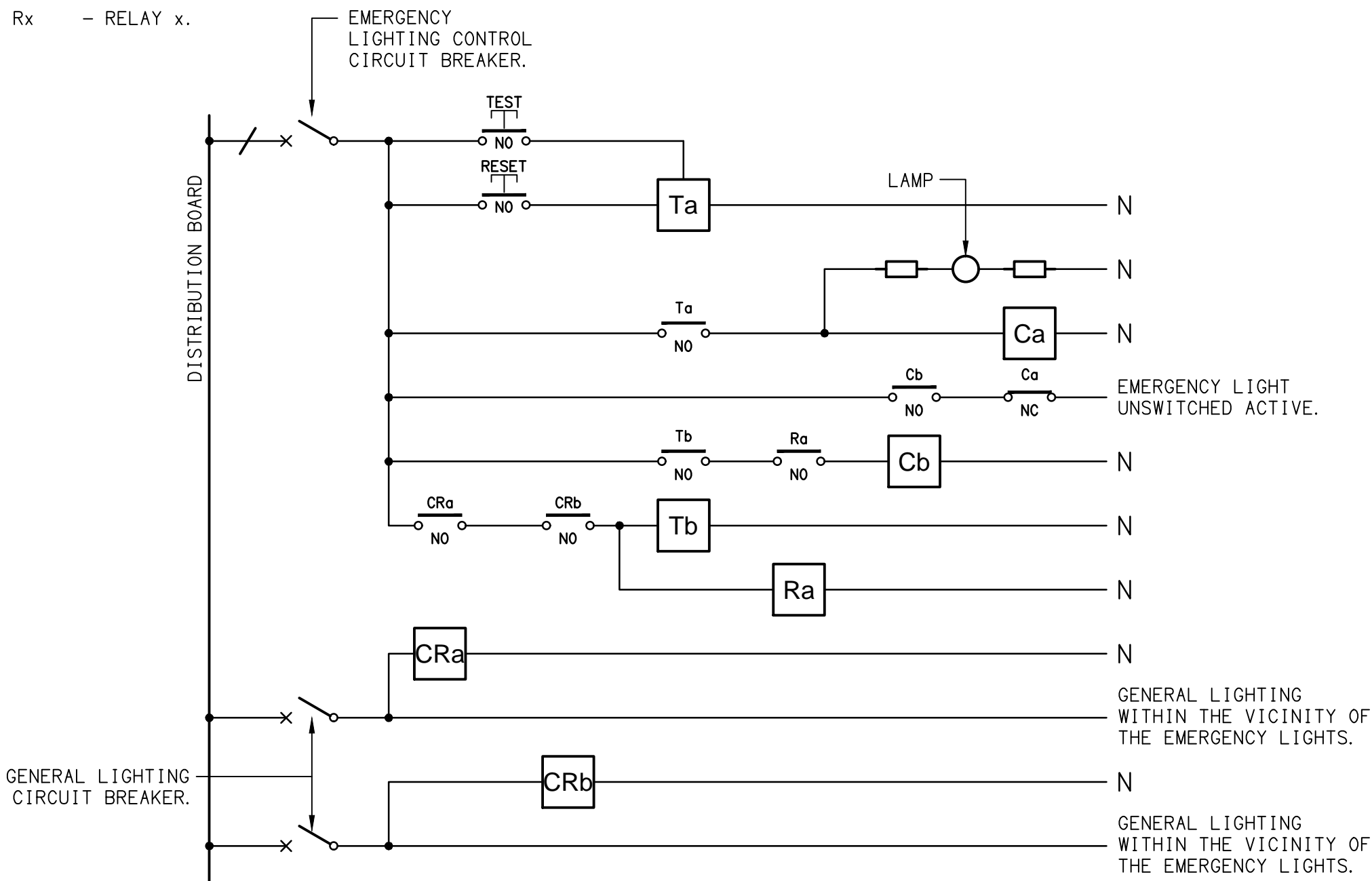


DETAIL

TYPICAL OUTLET MOUNTINGS
NOT TO SCALE

EQUIPMENT:

- TEST - TEST PUSH BUTTON MOUNTED ON THE DISTRIBUTION BOARD ESCUTCHEON.
RESET - RESET PUSH BUTTON MOUNTED ON THE DISTRIBUTION BOARD ESCUTCHEON.
LAMP - AMBER TEST INDICATING LAMP MOUNTED ON THE DISTRIBUTION BOARD ESCUTCHEON.
Ta - ADJUSTABLE 0-3 HOUR TIMED RELAY.
Tb - 15 MINUTE RUN-ON TIMER TO OPERATE UPON THE RETURN OF MAINS POWER.
Cx - CONTACTOR x.
CRx - CONTROL RELAY x.
Rx - RELAY x.



NOTES

1. THE EMERGENCY LIGHT UNSWITCHED ACTIVE / GENERAL LIGHTING SWITCHED ACTIVE CIRCUIT ARRANGEMENT AND CONTROL IS TYPICAL FOR ALL CIRCUITS SUPPLYING EMERGENCY LIGHTS.
2. PROVIDE ADDITIONAL CONTROL RELAYS (CRx) CONFIGURED AS PER CRa AND CRb FOR ALL ADDITIONAL LIGHTING CIRCUITS THAT SUPPLY LIGHTS IN THE VICINITY OF THE EMERGENCY LIGHTS.

SCHEMATIC

EMERGENCY LIGHTING
NOT TO SCALE

ELECTRICAL DESIGN GROUP BRISBANE PTY LTD ACN 092 710 793 TRADING AS: ELECTRICAL DESIGN GROUP	THE COPYRIGHT OF THIS DRAWING REMAINS THE PROPERTY OF THE ELECTRICAL DESIGN GROUP. USE FIGURED DIMENSIONS IN PREFERENCE TO SCALE. ALL DIMENSIONS TO BE VERIFIED ONSITE.	ELECTRICAL DESIGN GROUP ELECTRICAL BUILDING SERVICES CONSULTANTS BRISBANE GOLD COAST P.O.Box 15, Sherwood Q.4075 Phone: (07) 3278 4375 Email: brisbane@edg.net.au Web: www.edg.net.au	PROJECT: KINGS CHRISTIAN COLLEGE PIMPAMA, SENIOR SCHOOL - PIM23 198 PIMPAMA JACOBS WELL ROAD, PIMPAMA, QUEENSLAND	C CONSTRUCTION 22/09/2025 REV: DESCRIPTION: DATE:	
				DRAWING: ELECTRICAL SERVICES LEGEND & DETAILS SCALE: NOT TO SCALE AT A1 PROJECT NO: C3605a DRAWING NO: E01 REVISION: C	